

Model Portfolio Growth



October 2024

Objective

This portfolio is NOT a risk-free portfolio, rather, it is suitable for a client who is prepared to invest a large portion of their overall portfolio into equities, accepting a high level of risk for a potentially higher reward. The primary objective of this portfolio is to generate a long-term total return and income above the Bank of England's base rate and real terms growth (above inflation) which is significantly higher than the long-term return on cash after fees and costs. This portfolio can take up to 85% of the risk of investing in the world equity market, as measured by the worst expected loss and annualised volatility of returns. This portfolio has no defined capital preservation mandate and invests in all assets that are available from the investment universe to achieve the objectives, holding up to 35% in core, long-term assets which may be less liquid in nature, such as investment trusts. Due to the higher risk nature of this portfolio, the recommended time-horizon is a minimum of 7 years.

Management

The benchmark we use for comparison purposes for volatility is **AFI Aggressive**, noting that this benchmark currently holds **86.93% in Equity** (Analytics, 1st October 2024) and is therefore more aggressive than this portfolio. It would therefore be expected that the benchmark would outperform the portfolio and that the volatility of the benchmark would be higher. The model performance therefore cannot be directly compared to the benchmark.

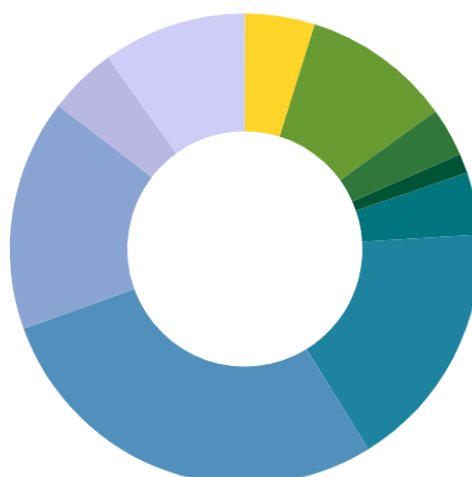
Performance

Asset	1 Month	3 Months	6 Months	12 Months	YTD	3 Years	5 Years	Since Launch 31/08/2018
OCM Growth	-0.26%	0.31%	2.75%	14.24%	8.02%	0.89%	32.09%	36.31%
Benchmark	0.41%	1.23%	3.17%	14.24%	8.15%	2.07%	27.10%	29.40%
UK Gilts	-0.07%	2.08%	1.23%	7.44%	-0.61%	-18.78%	-21.11%	-12.38%
UK Equities	-1.18%	2.30%	6.42%	13.60%	9.79%	22.62%	30.56%	33.72%

Source: FE Analytics, 1st October

Asset Allocation

- MONEY MARKET (4.81%)
- GLOBAL FIXED INTEREST (10.26%)
- PROPERTY (3.34%)
- OTHER NON-EQUITY (1.33%)
- COMMODITY (4.29%)
- UK EQUITY (17.17%)
- US EQUITY (28.30%)
- EUROPEAN EQUITY (15.94%)
- OTHER INTERNATIONAL EQUITY (4.68%)
- ASIAN EQUITY (9.89%)



Equity 75.97% - Non-Equity 24.03%

Long Hold Investing

The assets in this portfolio have been selected based on a long hold approach, with a recommended minimum investment horizon of 7 years. Unlike OCM's OBI proposition, this portfolio has no capital preservation mandate, and portfolio changes are made on a strategic rather than tactical basis, taking a long-term view on key themes and opportunities within the asset allocation.

The general asset allocation within the portfolio will be maintained over the long term, however underlying funds may be switched at the discretion of the Investment Committee in cases of underperformance or positioning shifts.

Key Facts

Benchmark
AFI Aggressive

Inception Date
31 August 2018

Historic Yield
2.08% per annum

Ongoing Strategy Charge
0.52% per annum

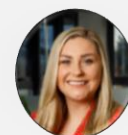
Volatility
10.89%

Max Loss
-14.09%

Rebalancing Frequency
Quarterly



Jason Stather-Lodge
Founder/CEO/CIO



Georgina Stone
Deputy CIO

Contact Us

OCM Wealth Management Limited
St Clair House, 5 Old Bedford Road,
Northampton, NN4 7AA

T: 01604 621467

E: info@ocmwealthmanagement.co.uk

W: ocmwealthmanagement.co.uk





Market Outlook

Global equity markets were mixed over the month of September, with US equities rallying on the back of the US Federal Reserve’s interest rate cut which sparked increased expectations for an economic soft-landing. Meanwhile, policymakers in China released a sizeable package of fiscal support in order to support the ailing economy, boosting short-term sentiment towards the region.

However, uncertainty across the UK and Eurozone weighed on equity market performance over the month, resulting in the Long Hold portfolios finishing the month marginally lower. Investors remain cautious regarding the outlook for fiscal and monetary policy in the UK as they await further clarity surrounding the upcoming Autumn Budget in which the Labour Party will deliver their plans to drive economic growth and reduce national debt levels. Meanwhile in Europe, recent data has pointed to a subdued economic recovery as the ECB announced a second reduction in interest rates.

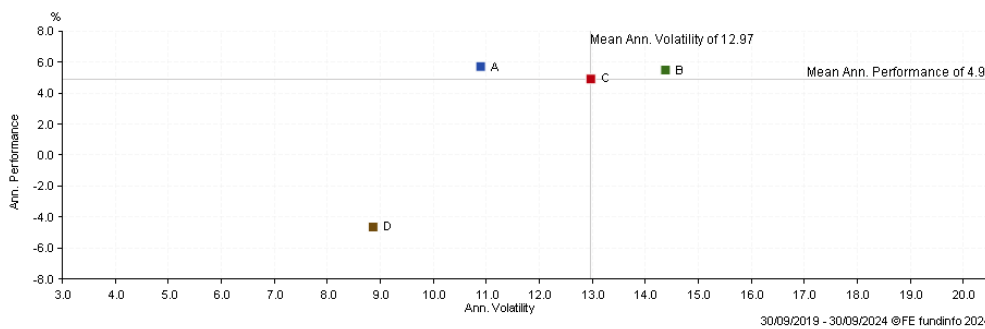
Financial market volatility is expected to remain a persistent theme over the remainder of the year as we approach the UK Autumn Budget and US Presidential Election. However, over the medium-term, it is our belief that with central banks now cutting interest rates, a more supportive investment backdrop can help drive a period of positive portfolio performance. On a regional basis, a decline in price pressures as well as a loosening of monetary policy is expected to boost the economic recovery in the UK and Europe following a period of subdued growth, providing a more supportive backdrop for risk assets moving forward.

Portfolio Positioning

As interest rates decline across key developed economies, we remain optimistic regarding the medium-term prospects for risk assets, with the Long-Hold portfolios carrying an exposure to those assets which appear well positioned benefit from a brightening economic backdrop. Following a period of subdued sentiment towards the UK and Europe in particular as economic growth stagnated, the Long-Hold portfolios carry an exposure to those assets which we believe will benefit from a loosening of financial conditions, a greater sense of political stability and a more attractive growth profile.

Despite the potential for short-term volatility in the US as we near the November elections, the Long-Hold portfolios continue to carry an exposure to those US assets which we believe will benefit from economic outperformance moving forward. A small exposure to Asian equities reflects our cautiously optimistic outlook for the region as key interest rates decline, although we remain watchful regarding risks surrounding China despite signs that policymakers will utilise looser fiscal policy to support growth over the short-term

Portfolio Volatility



This scatter chart reflects annualised volatility and return in GBP over the past 5 years. Over the long term, we would expect the Growth portfolio to exhibit a lower level of volatility than the benchmark.

Key	Name	Annualised Performance	Annualised Volatility
A	Growth TR in GB	5.72	10.89
B	UK Pav UK Equities TR in GB	5.48	14.38
C	AFI Aggressive TR in GB	4.91	12.97
D	UK Pav UK Gilts TR in GB	-4.63	8.88

Important Information

All data in this document has been extracted from Analytics as at 1st October 2024. Past performance cannot be used as a guide to future performance and the value of your investment will fall as well as rise in value. You may not get back all of your investment and the final value of your investment will depend on the performance of your portfolio. Performance figures quoted include fund manager charges but exclude adviser, discretionary, custodian and switch charges. Unless stated, income is reinvested into the portfolio. The information contained in in this document is for information purposes only. It does not constitute advice or a recommendation or an offer or solicitation for investment. Portfolio Expense is based on the Fusion platform and may vary for other platforms. Annualised Volatility and Max Loss Figures as detailed by FE Analytics over 5 years to period, where max loss represents the worst running return.